



*A Bit  
Shady*  
*Parasol Purveyors*

*Parasol Collection  
2011*

A Bit Shady ABN 90 306 399 695 PO Box 3003 Wamberal NSW Australia 2260  
Ph +61 (0) 432 014 002 Email: [parasols@abitshady.com.au](mailto:parasols@abitshady.com.au)  
[www.abitshady.com.au](http://www.abitshady.com.au)

# The Empress



Our most popular and elegant parasol. We love the Empress best of all for her curvacious scalloped canopy and her generous shade— suitable even for the most pale and sensitive skin.

The most regal of our parasols is wonderful for outdoor celebrations and summer weddings.



## AVAILABLE COLOURS:



*Poppy*



*Floss*



*Raven*



*Alabaster*

# The Vixen



The perfect fashion accessory for the wicked woman! The dramatic Vixen draws attention wherever she goes. Take your Vixen parasol to the races or a garden party and be the envy of all!

A unique and stylish parasol for ladies with flair!

Arc: 40.5cm / 16"

Diameter: 83cm / 32½"

Length: 91cm / 35¾"



## AVAILABLE COLOURS:



*Floss*



*Shiraz*



*Paprika*



*Raven*



*Alabaster*




# The Monk

A work of art – our Monk parasols have been handmade in exactly the same way for over 400 years. Not only excellent sun protection, the Monk parasols are made for monsoons in Asia and will keep you dry in the most heavy rain.

Three sizes available: Standard (large), Personal (medium) and Baby (small)

**NEW!**  
**Paper Monk Parasol**

With a canopy of oiled thick brown paper. Authentic design, made of natural products; bamboo, paper and cotton. Great for historical re-enactments. *Not waterproof, but very strong. Available only in personal size.*



**STANDARD MONK**  
 A generous shade for one or two

**PERSONAL MONK**  
 perfect for one

**BABY MONK**  
 Lovely for children

Arc:  
**STANDARD:** 56cm / 22"  
**PERSONAL:** 40.5cm / 16"  
**BABY:** 30cm / 12"



Diameter:  
**STANDARD:** 85cm / 33½"  
**PERSONAL:** 69cm / 27¼"  
**BABY:** 58cm / 23"

Length:  
**STANDARD:** 94cm / 37"  
**PERSONAL:** 91cm / 35¾"  
**BABY:** 75cm / 29½"



**AVAILABLE COLOURS:** PLEASE NOTE: The colour and size of our Monk parasols may differ slightly to those indicated as they are all hand crafted.



*Black Hot Pink Chinese Red Orange Violet Aqua Blue Forest Green White (striped) Off-White (plain)*

# The Contessa



A stunning lace parasol, one of the most beautiful in our collection! The Contessa is a stylish accessory for the lady of fine taste.

The Contessa's long elegant handle makes her very comfortable to hold. And her unique domed canopy with lining under the lace keeps bare shoulders out of the direct sun.

An exceptionally elegant parasol to take to your next outdoor soirée!

Arc: 51cm / 20"



Diameter: 81cm / 32"

Length: 91cm / 35<sup>3</sup>/<sub>4</sub>"



## AVAILABLE COLOURS:



*Red & Raven*



*Raven*



*Alabaster*



*Champagne*

# The Duchess



Arc: 48cm / 19"



Diameter: 90cm / 35½"

Length: 91cm / 35¾"

A beautiful long handled lace parasol, the Duchess is just made for a stylish lady. The cut-away canopy of lace with cotton lining is an unusual and beautiful feature and her long handle is comfortable to hold. The Duchess even looks lovely when folded.

An elegant parasol to take to your next garden party. The Duchess is also a fine wedding parasol in alabaster (white) or champagne.

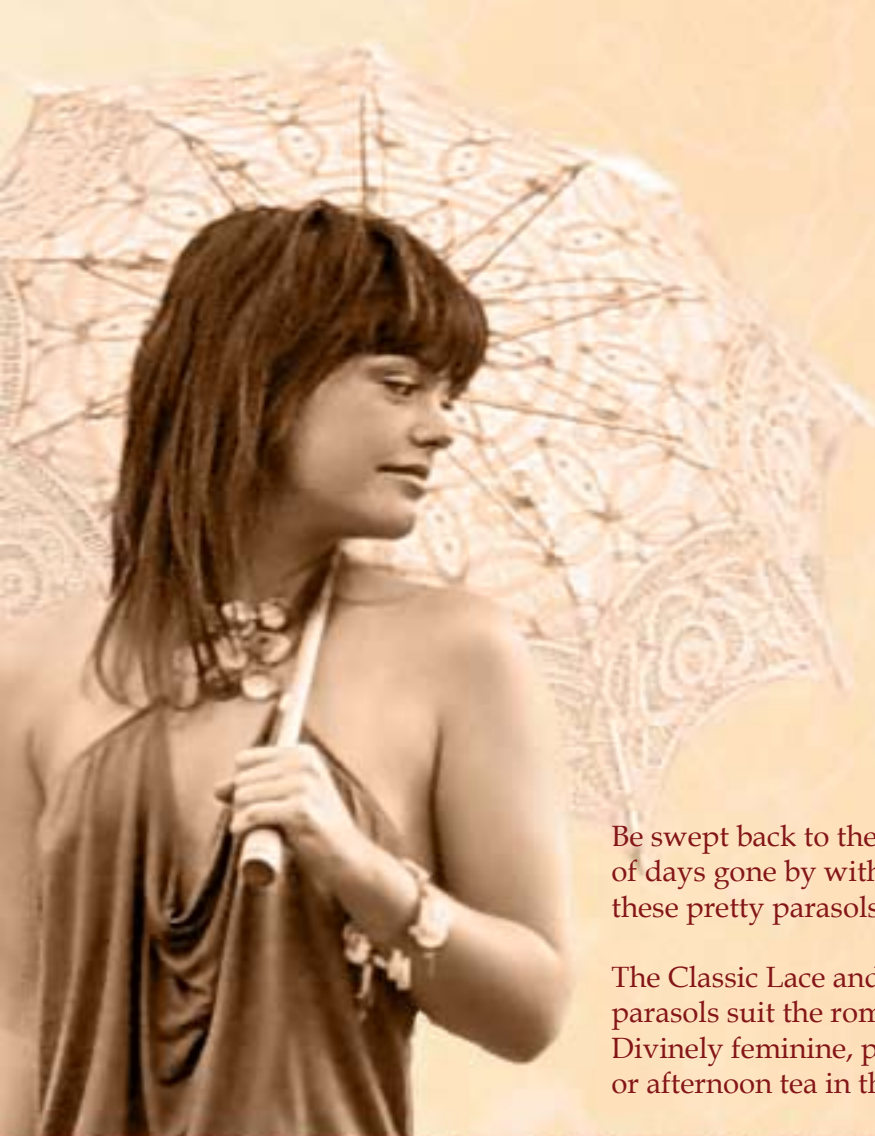
**AVAILABLE COLOURS:** *(images coming soon)*

*Red & Raven*

*Raven*

*Alabaster*

*Champagne*



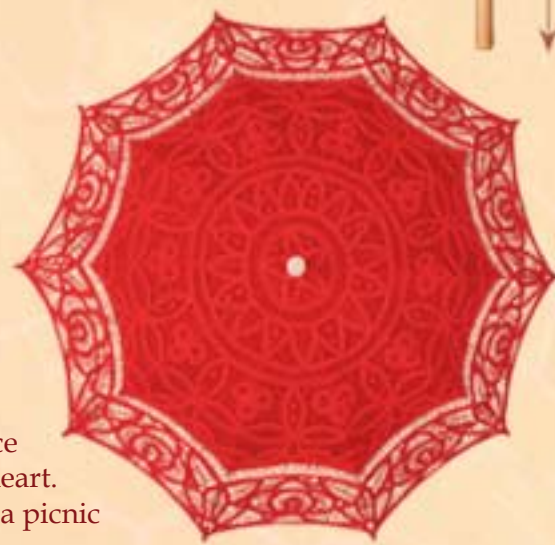
# Classic & Belle Lace

Arc: 46cm / 18"



Diameter: 82cm / 32 1/4"

Length: 66cm / 26"



*CLASSIC LACE*



*BELLE LACE*

Be swept back to the elegance of days gone by with one of these pretty parasols.

The Classic Lace and Belle Lace parasols suit the romantic at heart. Divinely feminine, perfect for a picnic or afternoon tea in the garden.

## AVAILABLE COLOURS:



*Blossom Pink*



*Cherry Red*



*Raven*



*Alabaster*



*Antique White*

# Folding Fans

## Bamboo Fans

A useful and charming accessory for ladies who like to keep cool, (and look good doing it!)



Natural Bamboo Ribs  
Black Bamboo Ribs



Hot Pink



Chinese Red



Orange



Royal Purple



Aqua Blue



Forest Green



White

## Classic Fans



White



Rose



Black



Ruby



Emerald



Amethyst



Sapphire

## Dancing Fans



Red & Raven



Raven



Alabaster



Champagne





Fan language, much used by fashionable ladies of the 18th Century, was of immense help in carrying out love affairs without the knowledge of the lady's chaperone. The courts of England and Spain were full of women who used this secret code as a way to cope with the restrictive social etiquette of the time.

The Secret Language of the Fan is very popular with young ladies today as a curiosity and a source of amusement. The Secret Language of the Fan is beautifully printed on an oversize postcard measuring 210mm x 148mm. There is room on the front of the card for an address or a brief message.

# The Secret Language of the Fan Postcard

